

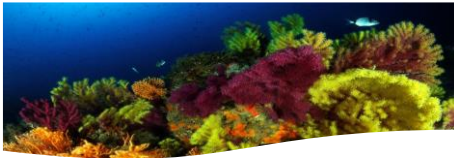
GENERAL FISHERIES COMMISSION FOR THE MEDITERRANEAN

37<sup>th</sup>  
Session  
Split, Croatia, 13-17 May 2013



## REGIONAL ADAPTIVE MANAGEMENT PLAN FOR RED CORAL (*Corallium rubrum*)

By Pilar Hernández



GFCM - Palazzo Blumenstihl, Via Vittoria Colonna 1, 00193, Rome, Italy – [www.gfcm.org](http://www.gfcm.org) – [gfcm-secretariat@fao.org](mailto:gfcm-secretariat@fao.org)

### GFCM Recommendation 36/2012/1 on further measures for the exploitation of red coral

- \* “The GFCM Secretariat is requested to take actions in support of the SAC with a view to put into operation, not later than 31 May 2013, the adaptive regional management plan for the exploitation of red coral.”





## Management measures provided for by the GFCM Recommendation GFCM/35/2011/2

### Technical measures on gear

- \* The use of the Remotely Operated underwater Vehicles (ROVs) is prohibited for the exploitation of red coral.



- \* The only permitted gear for the harvesting shall be a hammer used by a scuba diver.



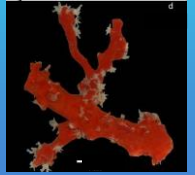
## Management measures provided for by the GFCM Recommendation GFCM/35/2011/2



60 m



300 m



800 m

### Technical measures on depth limit

- \* Prohibition to harvest at depth less than 50 m

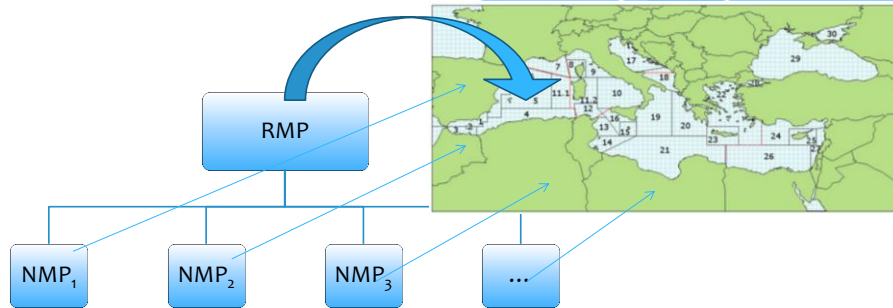
## Management measures provided for by the GFCM Recommendation GFCM/36/2012/1

### Technical measures on size

- \* Minimum size of **7 mm** at the trunk, measured within one centimeter from the base with a maximum tolerance limit of 10 % in live weight of undersized colonies.



The adaptive regional management plan should be based GFCM Guidelines and encompass measures already established on national plans



Must be compatible and eventually stricter

## Relationship between Regional and National Management Plans

The provisions contained in the **RMP** apply to all the red coral banks within the **GFCM competence area** while the **NMP** defines the management of red coral banks occurring within the **territorial waters of each specific country**.

The **NMPs** must contain **all the management measures** provided for by the **RMP** as well as **additional or stricter regulations** with respect to the RMP, necessary for a sustainable management of the red coral resource at the national level.

**Main goal** is to keep red coral stocks at a sustainable level

**Broad objective** is to develop a responsible management strategy for the red coral

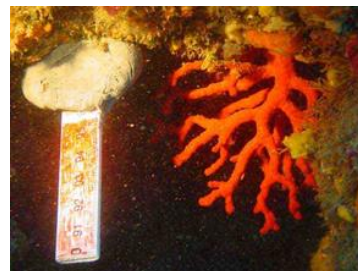
**Two Operational objectives (Oob)** based on precautionary approach, provisional and adaptive depending on data availability

Starting in 2014 CPCs must report data on coral

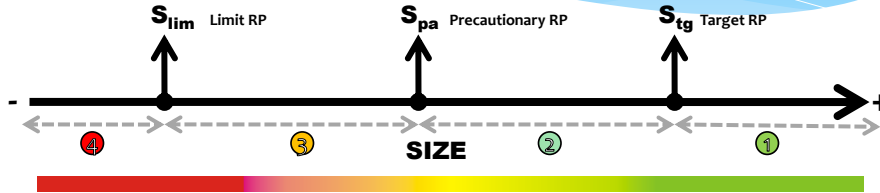
The first 'provisional' operational objective of the RMP

### Operational objective 1:

To Control that the actual legal size limit (7 mm) for harvesting red coral colonies is enforced at the GFCM level.



| GOAL  | OBJECTIVE                                 | INDICATOR                  | REFERENCE POINTS   | Precautionary RP  |
|---|---|----------------------------|--|---|
| TO KEEP RED CORAL STOCKS AT A SUSTAINABLE LEVEL | Control that the size limits are enforced | SIZE=S (size landing data) | Target= $S_{tg}$ (90% of landings is at size = legal size limit LS)<br>Limit= $S_{lim}$ (80% of landings is at size = legal size limit LS) | Threshold= $S_{pa}$ =(85% of landings is at size = legal size limit LS) |



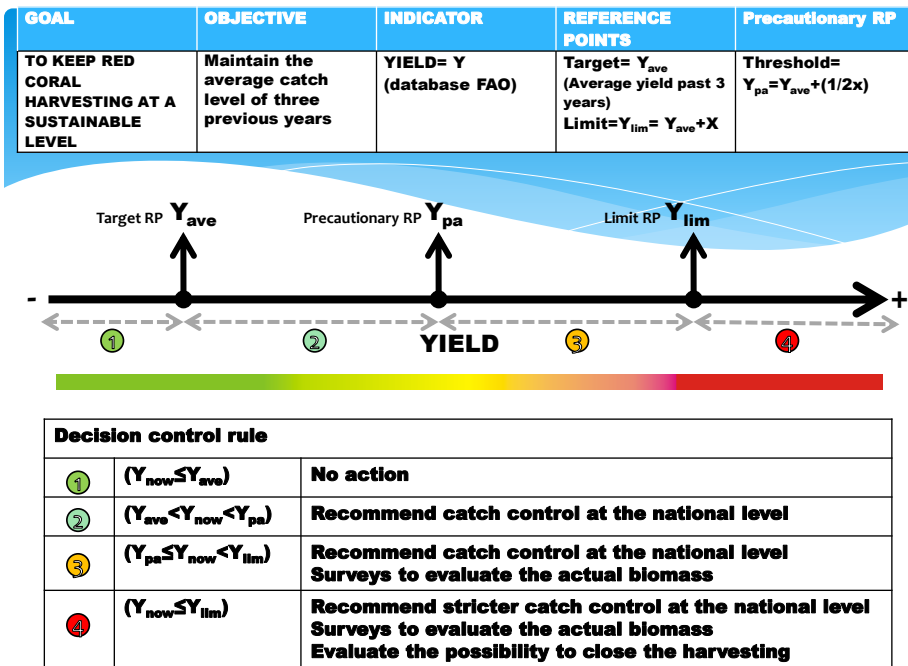
| Decision control rule |                                  |   |
|-----------------------|----------------------------------|---|
| ①                     | ( $S_{now} \geq S_{tg}$ )        | No action   |
| ②                     | ( $S_{pa} < S_{now} < S_{tg}$ )  | Recommend stricter controls at the national level   |
| ③                     | ( $S_{lim} < S_{now} < S_{pa}$ ) | Recommend stricter controls at the national level<br>Surveys to evaluate the actual size structure  |
| ④                     | ( $S_{now} < S_{lim}$ )          | Recommend stricter controls at the national level<br>Surveys to evaluate the actual size structure<br>Evaluate the possibility to close the fishing |

## The second ‘provisional’ operational objective of the RMP

### Operational objective 2:

To maintain the same catch level of three previous years, supposing it to be sustainable in order to keep the fishery working while waiting for a consistent assessment of red coral populations based on sound scientific information.





## Adaptive Plan

If new data provide evidence that the measures already set are no longer appropriate, amendments to the RMP should be made without delay.

All actions should be undertaken to obtain valid scientific data that confirm that both: current size limit and catch levels are ‘biologically sustainable’.

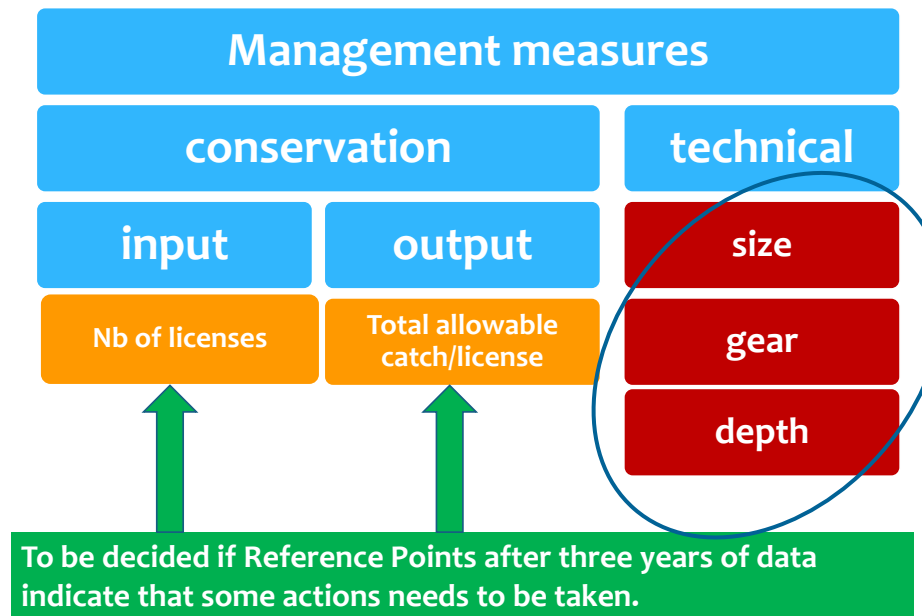


Data on landing

- After having at least 3 running year

Data on size

- Since the first year



## Management Strategy

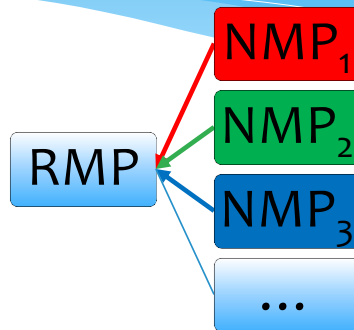
Current management measures as provided for by Recommendations **GFCM/35/2011/2** and **GFCM/36/2011/1** are consistent and adequate to fulfill the provisional Operational Objectives defined.

Focus should be put on the **Monitoring Control and Surveillance** measures at national level to ensure proper enforcement of the RMP

**Timely revisions** of the efficiency of the plan to keep the reference points at the desired precautionary level and the necessary **adjustments** of the RMP should be granted.



## Reviewing system and timeframe (RMP)



**Annually**, CPCs should report to GFCM on the implementation, enforcement and results of their respective NMPs.

These reports are an essential source of information for the **SAC** to advice on updating/reviewing the RMP.

## Reviewing system and timeframe (RMP)

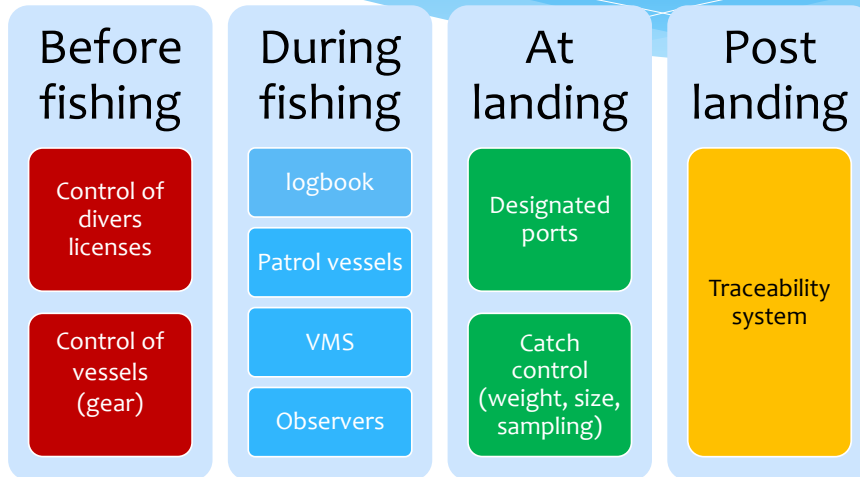
The review of RMP should occur **every 3-5 year** or earlier if new data and/or urgent matters require for the anticipation of the process.

The review should be based on all the information gathered through the annual reports coming from the NMPs and from the compilation of all the available data on red coral from different source (GFCM forms, scientific community, society, industry, fishers).

The final decision on which modification is to be accepted is made by the GFCM Commission after the SAC advice.



## Suggested MCS measures to implement at national level



## Traceability mechanism

Obligation of filling up **logbook** for each diving operation and regular **monitoring at the designated landing ports** :

1. The logbook should include a specific section for **trade data**;
2. Total weight and number of colonies as reflected in the relevant pages of the logbook should be **certified** at the designated ports within 72 hours from collection;
3. At the time of each sale, the relevant section of the logbook should be completed with the data of the **sold colonies, of the seller and the buyer**. Furthermore, the seller must send a copy of that, within 72 hours of sale, to the competent authorities in the territory where the sale occurred.
4. The feasibility of labelling all the colonies with a unique code, to be mandatorily cited in the selling documents, should be also evaluated.

## Think Regionally, act locally



For the compliance of the described management measures the proper **Monitoring, Control and Surveillance actions should be decided locally** in consultation with the stakeholders.

Those decided at the regional level (defined in the RMP) **should be mandatorily implemented** and eventually complemented with additional or stricter ones in the NMP.

## IMPLEMENTATION AND ENFORCEMENT MECHANISMS



CPCs are asked to take all measures to ensure that the provisions of the RMP are covered under **national legislation**.

In particular, increase enforcement against **poaching**, reported to be widespread and in alarming increase, is highly envisaged.

GENERAL FISHERIES COMMISSION FOR THE MEDITERRANEAN

**Thank you for your  
attention !**

**37<sup>th</sup>  
Session**

*Split, Croatia, 13-17 May 2013*

