

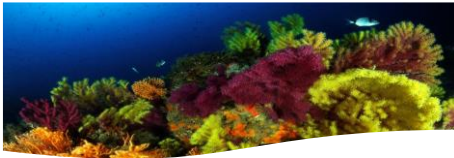
Workshop on the Regional Management Plan on Red Coral in the Mediterranean



Brussels, Belgium, 21-22 January 2014

REGIONAL ADAPTIVE MANAGEMENT PLAN FOR RED CORAL (*Corallium rubrum*)

By Pilar Hernández



GFCM - Palazzo Blumenstihl, Via Vittoria Colonna 1, 00193, Rome, Italy – www.gfcm.org – gfcm-secretariat@fao.org

GFCM Recommendation 36/2012/1 on further measures for the exploitation of red coral

- * “The GFCM Secretariat is requested to take actions in support of the SAC with a view to put into operation, not later than 31 May 2013, the adaptive regional management plan for the exploitation of red coral.”





Main goal is to keep red coral stocks at a sustainable level

Broad objective is to develop a responsible management strategy for the red coral

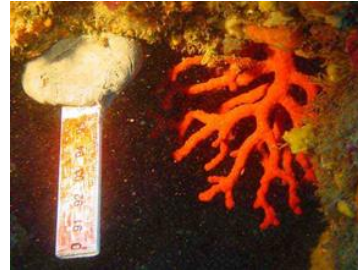
Two Operational objectives (Oob) based on precautionary approach, provisional and adaptive depending on data availability

Starting in 2014 CPCs must report data on coral

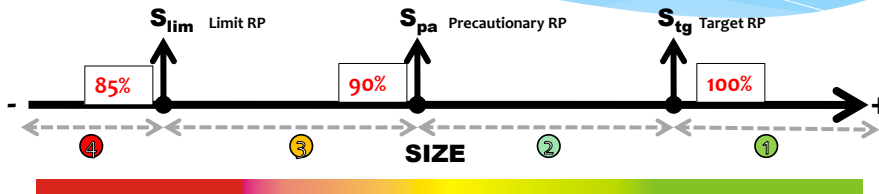
The first 'provisional' operational objective of the RMP

Operational objective 1:

To Control that the actual legal size limit (7 mm) for harvesting red coral colonies is enforced at the GFCM level.



GOAL	OBJECTIVE	INDICATOR	REFERENCE POINTS	Precautionary RP
TO KEEP RED CORAL STOCKS AT A SUSTAINABLE LEVEL	Control that the size limits are enforced	SIZE=S (size landing data)	Target= S_{tg} (90% of landings is at size = legal size limit LS) Limit= S_{lim} (80% of landings is at size = legal size limit LS)	Threshold= S_{pa} (85% of landings is at size = legal size limit LS)



Decision control rule		
①	$(S_{now} \geq S_{tg})$	No action
②	$(S_{pa} < S_{now} < S_{tg})$	Recommend stricter controls at the national level
③	$(S_{lim} < S_{now} < S_{pa})$	Recommend stricter controls at the national level Surveys to evaluate the
④	$(S_{now} < S_{lim})$	Recommend stricter controls at the national level Surveys to evaluate the possibility to close the fishing

additional actions for the control of harvesting


The second 'provisional' operational objective of the RMP

Operational objective 2:

To maintain the same catch level of three previous years, supposing it to be sustainable in order to keep the fishery working **while waiting for a consistent assessment of red coral populations based on sound scientific information.**



GOAL	OBJECTIVE	INDICATOR	REFERENCE POINTS	Precautionary RP
TO KEEP RED CORAL HARVESTING AT A SUSTAINABLE	Maintain the average catch level of three previous years	YIELD= Y (database FAO)	Target= Y_{ave} (Average yield past 3 years) Limit= $Y = Y_{ave} + X$	Threshold= $Y_{pa} = Y_{ave} + (1/2x)$
<p>..... Postponed three years</p>				
		Evaluate the possibility to close the harvesting		


 General Fisheries Commission for the Mediterranean (GFCM)
RED CORAL DATA COLLECTION FORM

Year: -- MISSING --

Country: -- MISSING --

Reporting Authority / Institution: -- MISSING --

----- BASIC HARVEST INFORMATION -----

GFCM Geographical Area (GSA)	Statistical Grid	Bank (name)	Size of the bank (approx. in m2)	Lat	Long	Method of harvest (gear)	Effort (no. of dives)	Depth range	Total weight	No. of colonies	Average diameter (mm)
1											
2											
3											

According to Recommendations in force, GFCM Rec. 35/2011/2 and Rec. 36/2012/1 the following technical management measures are currently applied in the whole region

Management tools	Current measures at regional level
Depth restrictions	Prohibition to collect coral at depths shallower than 50 m
○ Gear restriction	The only permitted gear is manual hammer by scuba diving ROV for prospection is permitted until the end of 2015. At that point the SAC will decide if in some area under request of the competent authority and after the due provision of data as stated in Rec. GFCM 35/11/2 it might be allowed based on scientific studies of its potential impact.
Minimum landing size	7 mm basal diameter \pm 10%

Although to be decided at national level the following technical measures were also discussed to rank them in terms of effectiveness and feasibility

Management tools	At Regional level	Rank effectiveness	Rank feasibility
Limits to fishing capacity	Licensing systems	High	High
Limits to catches	Individual annual quota	High	High
	Individual daily quota	Medium	Medium
Spatial restrictions		High	High
Temporal restrictions		High	High

IMPLEMENTATION AND ENFORCEMENT MECHANISMS



CPCs are asked to take all measures to ensure that the provisions of the RMP are covered under **national legislation**.

In particular, increase enforcement against **poaching**, reported to be widespread and in alarming increase, is highly envisaged.

Think Regionally, act locally



For the compliance of the described management measures the proper **Monitoring, Control and Surveillance actions should be decided locally** in consultation with the stakeholders.

Those decided at the regional level (defined in the RMP) **should be mandatorily implemented** and eventually complemented with additional or stricter ones in the NMP.

MCS Measures to be adopted by the CPCs

MCS potential measures	Proposals by National representatives	Rank effectiveness	Rank feasibility	Purpose
Logbook	Logbook (all)	High	High	To register the catches and related data by dive on a daily basis
Designation of ports	Designation of ports (all)	High	High	Provide the designated ports with the necessary facilities and personnel
Observers on board	Scientific observers on board (Italy)	High	Low	To control size, transshipment and sales prior to landing
Patrolling unit		High	Medium	To control depth, licenses, gear, size
	Advance warning (France)	High	High	A phone call to the port when the vessel is approaching
Certification of logbook at landing sites		High	High	Logbook must be certified at landing to verify it contents with the actual landed catches.
	Tracking device on board (EU)	High	Medium	To control that harvest takes place only on appropriate sites
	Use of videos of authorized underwater devices (France)	Medium	Low	Inspection of videos and images taken to better locate the colonies and to assess the effects of the fishing.
Traceability mechanisms	Sales note with the details of the seller, the buyer and a code for each lot sold.	Medium	Medium	To control the origin of corals, and address poaching. Certified coral from legal fisheries might have add value.

Other relevant conclusions

- The participants agreed with the proposal of 3-5 years review time of the RMP, and suggest the first interval at **3 years**, after the first reception of the official data through the GFCM data entry tool.
- **Stakeholder involvement** was seen by all participants as strongly **needed** when designing and implementing plans. All the resources should be put at disposal for consultation with all the actors.
- The participants acknowledge that the research needs specified during the GFCM red coral workshops in Alghero and Ajaccio in 2010 and 2011 **still apply**. CPCs should enter into cooperative arrangements with other appropriate international frameworks and promote participatory programmes with relevant stakeholders .
- Discussions on ROV concluded that in view of the SAC advise expected after 2015 a **dedicated workshop on ROV should be conducted**.

Terms of reference for a workshop on the use of ROV beyond 2015

1. State of the art of ROV technology
2. Practicability of ROV for red coral harvesting
3. Socioeconomic analysis
4. Management considerations for the commence of ROV harvesting of red coral
5. Conservation considerations in the context of ROV harvesting
6. Adaptive framework for the use of ROV

GENERAL FISHERIES COMMISSION FOR THE MEDITERRANEAN

**Thank you for your
attention !**

**37th
Session**

Split, Croatia, 13-17 May 2013

