



**Three years' experience with small-scale fishers
and No-Take-Zones in Gökova SEPA (Eastern
Mediterranean), Turkey**

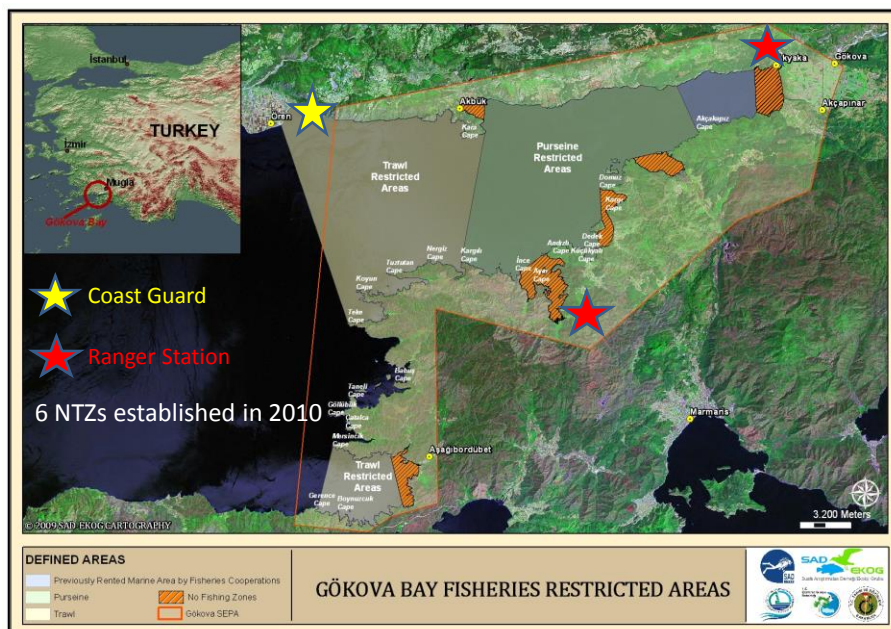
Zafer Kızılkaya¹, Vahdet Ünal^{2,1}, Derya Yıldırım²


¹ Mediterranean Conservation Society

² Ege University, Faculty of Fisheries



Establishment of Gökova NTZs
(24 km²)






Total area: 109.280 ha
Marine area: 82.249 ha

Stakeholders

Main users of the area are fisherman

- 3 Fishery Cooperatives
- Total 100 fishing boats



Responsible Ministries

- Ministry of Environment and Urbanization
- Ministry of Forestry and Water Affairs
- Ministry of Food, Agriculture and Livestock



Responsible Local Agencies

- Directorate General for Protection of Natural Assets
- Directorate General of Fisheries and Aquaculture
- Directorate General for Nature Conservation and National Parks
- Coast Guard
- Gendarme
- Local Administrators



Importance of the Area

- Key Biodiversity Area (designated with in the criterias of Natura 2000 sites)
- WWF Global 200 Eco-region
- Special Environmental Protected Area



Importance of the Area

Habitat of key species;

Monachus monachus

Carcharhinus plumbeus

Caretta caretta

Chelonia mydas

Posidonia oceanica



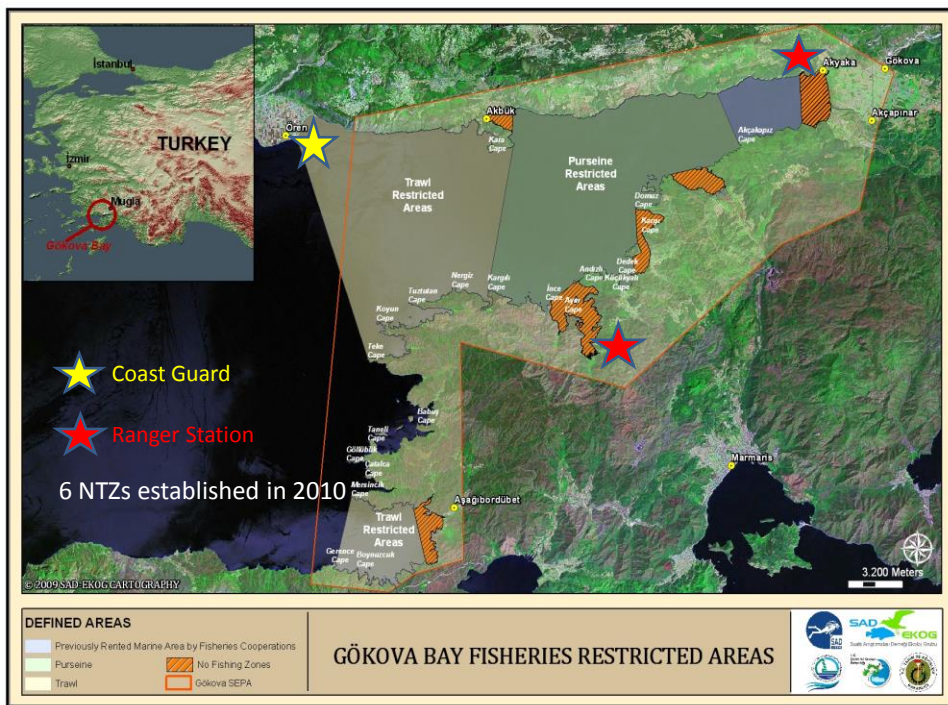
After convincing fisherman for NTZs...

1. Community Marine Ranger system
2. Better enforcement
3. Public awareness (sign boards, brochures etc)
4. Installments of marker poles on the borders of NTZs
5. Systematic monitoring in and out of NTZs.

Marine rangers located at two station.

English Bay is the biggest NTZ with 6.40 km²

Akyaka Bay is the third biggest NTZ with 2.21 km² and two fisheries cooperatives located.



Informative sign boards placed at 6 NTZs



14 marker poles installed at the borders of NTZs



Systematic monitoring in and out of NTZs.



Improvements in three years**

27 % increase of fish population*

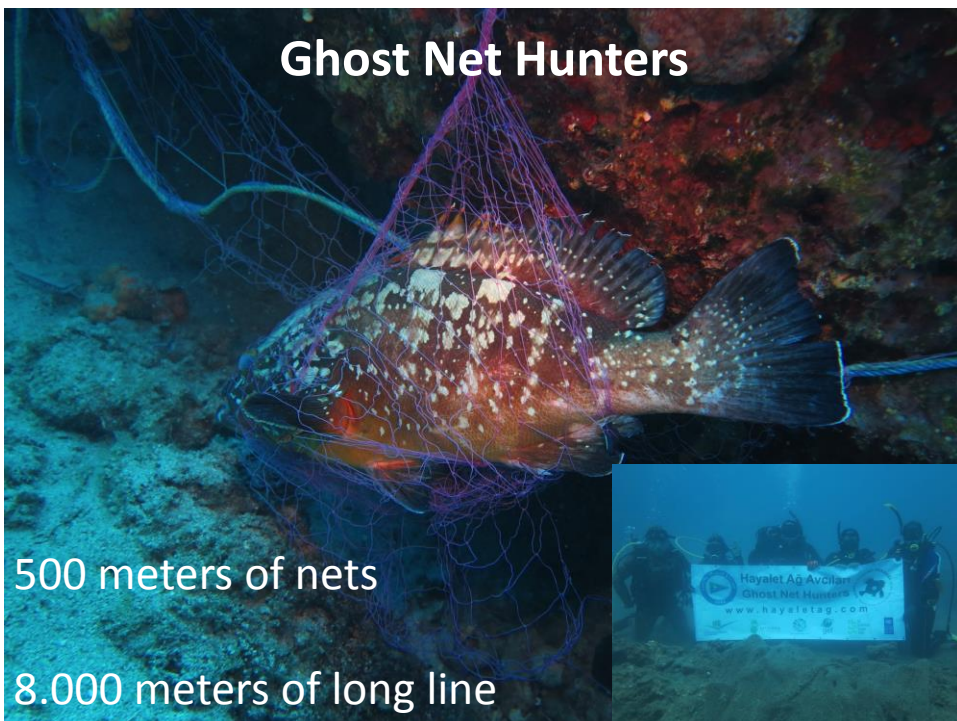


19 % increase of *Epinephelus marginatus* population*

18 % increase of *Epinephelus costae* population*

*Monitoring of the fish population in Fisheries Restricted Areas of Gökova SEPA and Selimiye & Orhaniye Bays of Datça – Bozburun SEPA (June 2011 – December 2013); Ecological Research Society, Ankara. (Preliminary Results – unpublished report)

** Visual monitoring





MANY THANKS

www.akdenizkoruma.org.tr

This project is supported by the project "Strengthening the System of Marine and Coastal Protected Areas of Turkey" by the Ministry of Environment and Urbanization and UNDP Turkey.

www.mpa.gov.tr

