



*General Fisheries Commission for the Mediterranean
Commission Générale des Pêches pour la Méditerranée*



GFCM



Regional Information Systems



Second meeting of the Working Group on Bycatch
Antalya, Turkey, 7-9 December 2011



Pilar HERNANDEZ
Information Officer
GFCM Secretariat



The Agreement for the establishment of the **General Fisheries Commission for the Mediterranean** (GFCM), under the provisions of Article XIV of the FAO constitution, was approved by the FAO Conference in 1949 and entered into force in 1952. Amended in 1997

GFCM OBJECTIVE

To promote the development, conservation, rational management and best utilization of living marine resources, as well as the sustainable development of aquaculture in the Mediterranean, Black Sea and connecting waters

■ GFCM FUNCTIONS

- To keep under review the **state** of the Mediterranean living resources, including their abundance and the level of their exploitation, as well as the state of the fisheries
- To formulate and recommend, appropriate **measures**:
 - for the conservation and rational management of living marine resources
 - for the implementation of these recommendations
- To keep under review the **economic** and **social** aspects of the fishing industry and recommend any measures aimed at its development;

■ GFCM FUNCTIONS

- to encourage, recommend and coordinate **training** and extension activities in all aspects of fisheries
- to encourage, recommend, coordinate and, as appropriate, undertake **research** and development activities, including cooperative projects
- to assemble, **publish** or disseminate information regarding exploitable living marine resources, fisheries and aquaculture

GFCM MEMBERS AND CONVENTION AREA

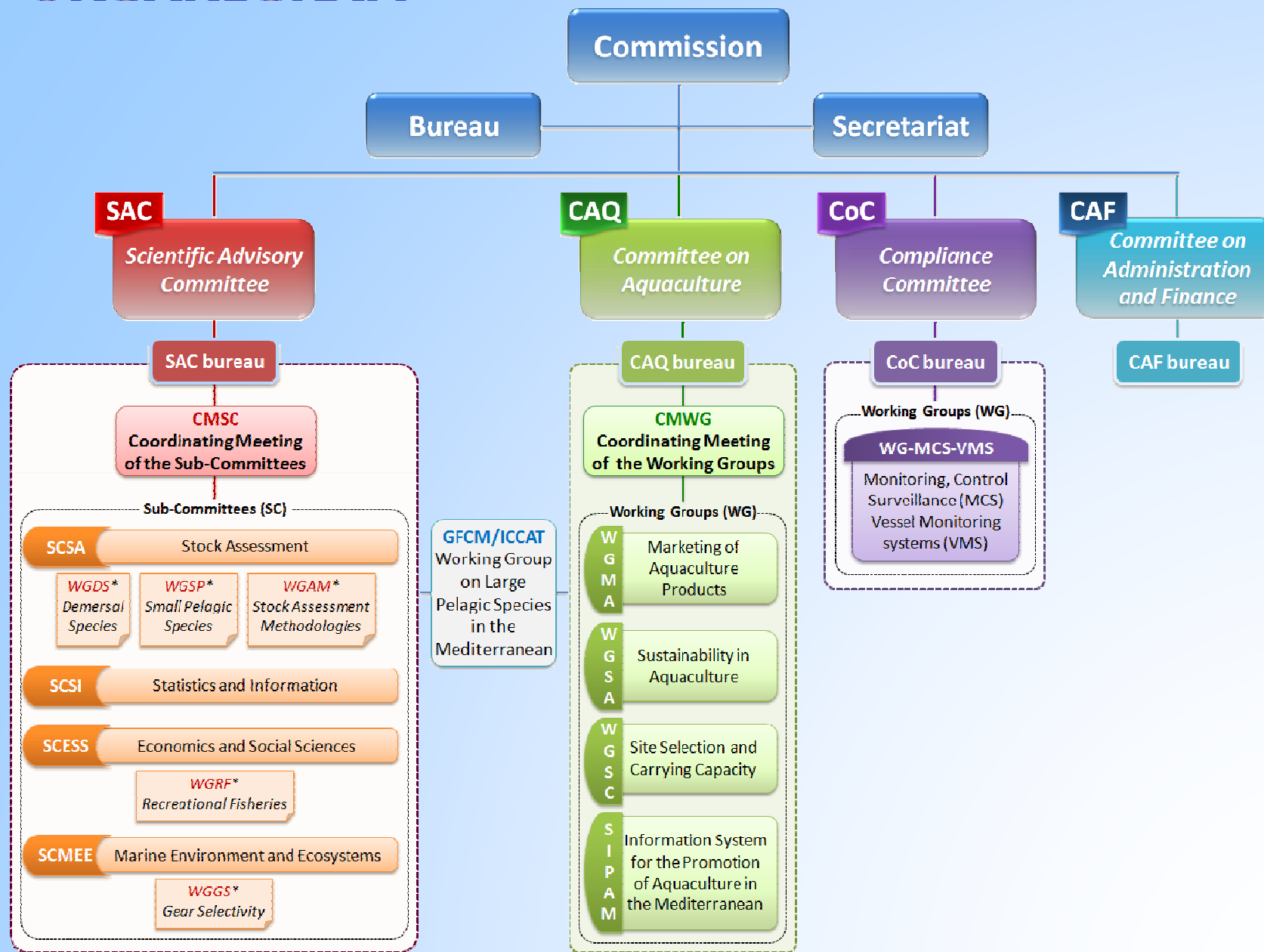
24 Members

-  Albania
-  Algeria
-  Bulgaria
-  Croatia
-  Cyprus
-  European Union
-  Egypt
-  France
-  Greece
-  Israel
-  Italy
-  Japan
-  Lebanon
-  Libya
-  Malta
-  Monaco
-  Montenegro
-  Morocco
-  Romania
-  Slovenia
-  Spain
-  Syria
-  Tunisia
-  Turkey

**Mediterranean, Black Sea and
connecting waters**



ORGANIGRAM



*Working Groups (WG)

GFCM Data Information Reporting Requirements

Theme	Recommendation / Resolution Reference	Description of data or information to be submitted	Frequency of submission	Deadline	Reporting tool or format
1 Aquaculture	Recommendation GFCM/35/2011/6	Aquaculture production, Production Centres, Market data	Annual	30 th June	SIPAM data entry components on the web
2 Dolphin Fish	Recommendation GFCM/2006/2	Report on the implementation of management measures laid down in this Recommendation	Annual	-	Excel reporting form
3 IUU	Recommendation GFCM/33/2009/8	Information on presumed IUU fishing activities (Annex 1)	Annual	120 days before annual GFCM Session	-
4 Red Coral	Recommendation GFCM/35/2011/2	Record of authorized fishermen, daily catches and fishing effort by area and depths (e.g. number of fishing days, numbers of diving, etc)	Annual	Before SAC session	Not yet defined
5 Registered Ports	Recommendation GFCM/32/2008/1	List of designated ports to which foreign vessels may be permitted access	As required and in line with articles 10 and 11 of this Recommendation	-	-
		Information of inspection as given in Annex E paragraph 3	As required	As required	To be developed in line with ANNEX E
6 STATLANT 37A	Decision taken during the GFCM 32nd Session to run a three-year trial using a GSA-compatible STATLANT37A questionnaire	Reporting of landing data by species, by FAO division and GFCM Geographical Sub-Area (GSA) (map)	Annual	31 st August	GSA-compatible STATLANT 37A excel questionnaire Ver.May-2011
7 Task 1	Recommendation GFCM/33/2009/3				Reference Years FROM 2010 ONWARDS
		Task 1 - Operational Units data (Statistical Matrix Fleet segmentation)	Annual	31st May	<ul style="list-style-type: none"> Documentation + XML Schema Definition: Online Offline* CSV data exchange format Reference Years UP TO 2009 <ul style="list-style-type: none"> TASK 1 Beta Application Ver.26.01.2011 Documentation + XML Schema Definition: Online Offline* CSV data exchange format *if you encounter problems opening this file: save it, right click on it, click Properties, click Unblock
8 Vessel Records	Resolution GFCM/35/2011/1	<ul style="list-style-type: none"> Fleet Register (RFR) Rec. GFCM/33/2009/5 Authorized Vessel List (AVL) Rec. GFCM/33/2009/6 Minimum Mesh Size (MMS) Rec. GFCM/33/2009/2 Fisheries Restricted Areas (FRA) Rec. GFCM/33/2009/1 	Annual followed by updates	Beginning of each calendar year (and not later than 31st March) followed by updates, as appropriate.	<ul style="list-style-type: none"> Excel Data Reporting Tool Ver.July2011 Documentation + XML Schema Definition: Online Offline* CSV data exchange format *if you encounter problems opening this file: save it, right click on it, click Properties, click Unblock
9 VMS	Recommendation GFCM/33/2009/7	Contact details of FMC national authorities	Once	31 st December 2009	-
		National report on the progress of establishment of a vessel monitoring system	Annual	-	-
		VMS data	-	Starting from 1 st January 2011	Not yet defined

1 **Aquaculture**

2 **Dolphin Fish**

3 **IUU**

4 **Red Coral**

5 **Registered Ports**


6 **STATLANT 37A**

7 **TASK 1**

8 **Vessel Records**

9 **VMS**

AQUACULTURE DATA AND INFORMATION

 **Recommendation GFCM/35/2011/6**
on reporting of aquaculture data and information, amending Rec. GFCM/33/2009/4

 **Production Statistics**

- CWP Statistical Areas;
- Culture environment;
- Cultured species;
- System of culture;
- Type of culture;
- Type of product;
- Production quantity;
- Production value.

 **Production Centres**

- Unit (segment) of production;
- Number of production centres per unit
- Cultured species per unit (segment);
- Total volume (m³) of facilities of production centres per segment;
- Destination of product per segment.

 **Capture Based Production**

- Capture-based aquaculture input

 **Market**

- Feed, Fishmeal and Fish Oil:
 - Domestic production
 - Feed prices for major farmed species
 - Domestic Prices
- Trade and Consumption:
 - Import and export of aquatic products (weight and value)
 - Import and export of major farmed species (weight and value)
 - Main export destination for farmed species
 - National per capita consumption of aquatic products



1 Aquaculture

2 **Dolphin Fish**

3 IUU

4 Red Coral

5 Registered
Ports

6 STATLANT 37A

7 TASK 1

8 Vessel
Records

9 VMS

DOLPHIN FISH FISHERIES

Recommendation GFCM/30/2006/2



Establishment of a closed season for the dolphin fish fisheries using Fishing Aggregation Devices (FADs)



Dolphin Fish data

- Year;
- Fishing period;
- Extension of fishing period into January of the following year;
- GSAs of fishing operation;
- Total landings;
- Total Transhipments;
- System of collection and treatment of catch and effort data;
- Number of vessels involved in the fishery;
- Total GT of vessels involved in the fishery;
- Length range of vessels involved in the fishery (m);
- Average length of vessels involved in the fishery (m);
- Estimated total catch (tonnes);
- Estimated total effort (number of FADs * number of fishing trips);
- Average size of fish caught at the beginning /end of the season.

1 Aquaculture

2 Dolphin Fish

3 **IUU**

4 Red Coral

5 Registered
Ports

6 STATLANT 37A

7 TASK 1

8 Vessel
Records

9 VMS

ILLEGAL, UNREPORTED AND UNREGULATED VESSEL LIST

Recommendation GFCM/33/2009/8



on the establishment of a list of vessels presumed to have carried out IUU fishing in the GFCM area repealing Rec. GFCM/30/2006/4



IUU vessel data

- Name of vessel and previous name(s), if any;
- Flag of vessel and previous flag(s), if any;
- Name and address of owner(s) of vessel and previous owner(s), including beneficial owner(s), and owner's place of registration;
- Operator of vessel and previous operator(s);
- Call sign of vessel and previous call sign, if any;
- Lloyds/IMO number;
- Photographs of the vessel;
- Date vessel was first included on the IUU Vessel List;
- Summary of activities which justify inclusion of the vessel on the IUU Vessel List, together with references to all relevant evidence.

GFCM Regional Information Systems

1 Aquaculture

2 Dolphin Fish

3 IUU

4 Red Coral

5 Registered
Ports

6 STATLANT 37A

7 TASK 1

8 Vessel
Records

9 VMS

RED CORAL



Recommendation GFCM/35/2011/2

on the exploitation of red coral in the GFCM Competence Area



Red Coral – Provisional data schema

- Numbers of banks;
- Numbers of marine reserves;
- Size of marine reserves;
- Number of harvesting licenses in the country;
- Number of active licenses;
- Cost of license fee per year;
- Licenses valid for specific area, or roving?
- Permitted quota per active license;
- Legal depth range for the fishery;
- Quota that is recommended by scientific studies;
- Is the yield declared by diver, or recorded obligatory by authorities?
- Legal Minimum size (plus/minus allowance);
- Recommended minimum size by scientific studies;
- How is the minimum size controlled?
- Rotation Harvest? -If so: how many areas? -what rotation intervals?
- GFCM Geographical Area (GSA);
- GFCM Statistical Grid;
- Bank;
- Catch data/stock;
- Effort;
- Stock status (size);
- Biological parameters.

1 Aquaculture

2 Dolphin Fish

3 IUU

4 Red Coral

5 **Registered Ports**

6 STATLANT 37A

7 TASK 1

8 Vessel Records

9 VMS

REGISTERED PORTS

Recommendation GFCM/32/2008/1



Regional scheme on port state measures to combat illegal, unreported and unregulated fishing activities in the GFCM area



Ports list

- List of designated ports to which foreign vessels may be permitted access
- Information of inspection
 - *inspection references;*
 - *vessel identification;*
 - *fishing authorization(s) (licenses/permits);*
 - *trip information;*
 - *result of the inspection on discharge;*
 - *quantities inspected;*
 - *result of gear inspection;*
 - *irregularities detected;*
 - *actions taken; and*
 - *information from the flag State.*

GFCM Regional Information Systems

1 Aquaculture

2 Dolphin Fish

3 IUU

4 Red Coral

5 Registered
Ports

6 **STATLANT 37A**

7 TASK 1

8 Vessel
Records

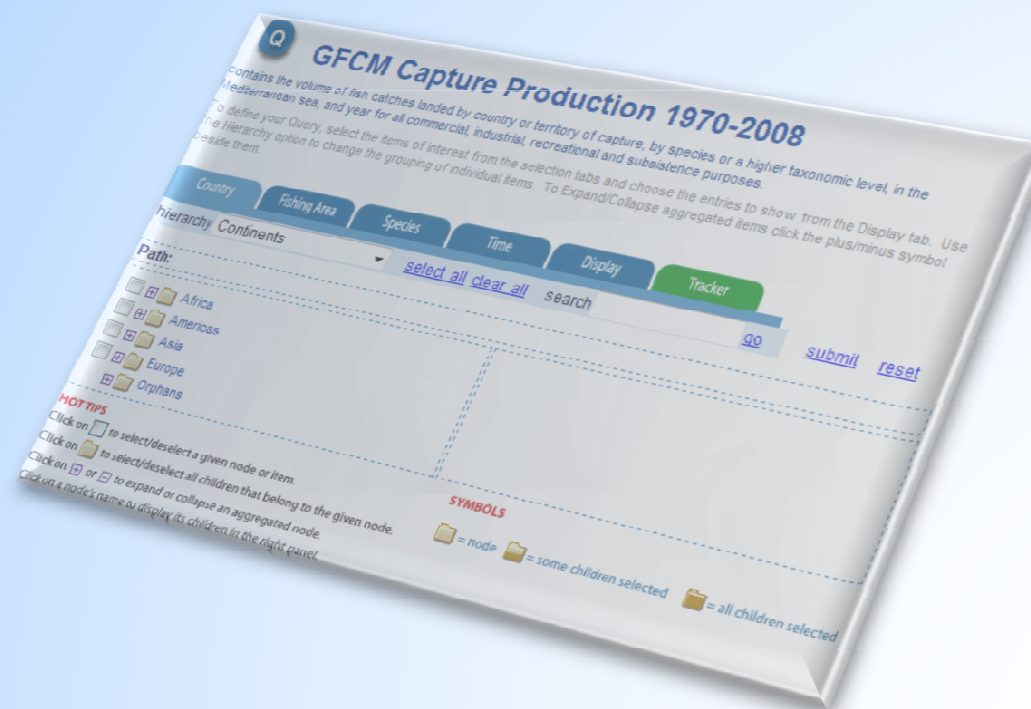
9 VMS

STATLANT 37A

 **NO GFCM Recommendation**

 **GFCM Capture Production**

- Information on capture production is collected annually from relevant national offices concerned with fishery statistics, by means of the form GFCM-STATLANT 37A *Reporting of landing data by species, by FAO division and GFCM Geographical Sub-Area (GSA)*



GFCM Capture Production 1970-2008

contains the volume of fish catches landed by country or territory of capture, by species or a higher taxonomic level, in the Mediterranean Sea, and year for all commercial, industrial, recreational and subsistence purposes.

To define your Query, select the items of interest from the selection tabs and choose the entries to show from the Display tab. Use the hierarchy option to change the grouping of individual items. To Expand/Collapse aggregated items click the plus/minus symbol beside them.

Country Fishing Area Species Time Display Tracker

Path: select all clear all search go submit reset

Hierarchy Continents

- Africa
- Americas
- Asia
- Europe
- Oceans

HOT TIPS

- Click on to select/deselect a given node or item.
- Click on to select/deselect all children that belong to the given node.
- Click on or to expand or collapse an aggregated node.
- Click on a node's name to display its children in the right panel.

SYMBOLS

- = node
- = some children selected
- = all children selected

1 Aquaculture

2 Dolphin Fish

3 IUU

4 Red Coral

5 Registered Ports

6 STATLANT 37A

7 **TASK 1**

8 Vessel Records

9 VMS

TASK 1 Operational Units



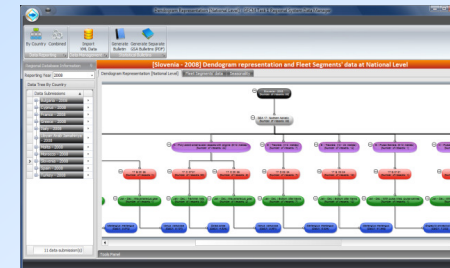
Recommendation GFCM/33/2009/3

On the implementation of the GFCM Task 1 statistical matrix and repealing Res GFCM/31/2007/1

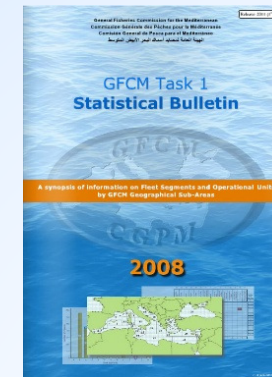


Task 1 Database

- Task 1.1: Fleet and fishing area information; capacity at Fleet Segment level
- Task 1.2: Main resources targeted and fishing activity information per Operational Unit
- Task 1.3: Economic variables including engine power, salary share, variable costs / fishing day per vessel, landing weight, landing value.
- Task 1.4: Catch and Effort data (catch/landing by species and overall effort values for a specific fishing period/gear combination, pertaining a given OU. Catches of discards and bycatch are also required)
- Task 1.5: Biological data [describing the catch given in Task 1.4]



**Regional
Information
System**



**Statistical
Bulletin**

VIEW TASK 1 STRUCTURE

- **Bycatch per Fishing Period (weight and number of individuals)**

**International Standard
Statistical Classification for
Aquatic Animals and Plants*

1 Aquaculture

2 Dolphin Fish

3 IUU

4 Red Coral

5 Registered
Ports

6 STATLANT 37A

7 **TASK 1**

8 Vessel
Records

9 VMS

TASK 1 Operational Units

1.1 Country - Year - Fleet Segments [at national level]

Vessels no., capacity

1.3 Economic data [at national level]

1.1 Fishing Area (GSAs)

1.2 Fleet Segments [operating at GSAs level]

Vessels no, capacity

1.2 Operational Unit

Gear Class, Group of Target Species, Vessels no.

1.2 Fishing Period / Gear

Period, Fishing Gear, Species, Vessels no.

1.4 Catch and Effort [TOT Fishing Period]

Catch, Effort, Discard, Bycatch

1.4 Catch [Species]

1.5 Biological Data [Species]

Operational Unit is a group of fishing vessels which are engaged in the same type of fishing operation within the same GSA, targeting the same species or group of species and belonging to the same economic segment. Fishing vessels may belong to more than one Operational Unit and the composition of Operational Units is subject to change over time.

GFCM Regional Information Systems

1 Aquaculture

2 Dolphin Fish

3 IUU

4 Red Coral

5 Registered
Ports

6 STATLANT 37A

7 **TASK 1**

8 Vessel
Records

9 VMS

TASK 1 Operational Units

1.1 Country - Year - Fleet Segments [at national level]

Vessels no, capacity

1.3 Economic data [at national level]

1.1 Fishing Area (GSAs)

1.2 Fleet Segments [operating at GSAs level]

Vessels no, capacity

1.2 Operational Unit

Gear Class, Group of Target Species, Vessels no.

1.2 Fishing Period / Gear

Ref. Year up to **2009** Overall Bycatch in tonnes, regardless the species

1.4 Catch and Effort [TOT Fishing Period]

Catch, Effort, Discard, ~~Bycatch~~

1.4 Bycatch [Group of Species] as 1.4 Catch [Species]

Ref. years
from **2010** onwards

Bycatch specified in tonnes
and/or no. of individuals
by Group of Species (ISSCAAP)



GFCM Task 1 - Operational Units DB Application ^{Beta}

[DB](#) | [Guide](#) | [Matrix](#) | [Comments](#) | [Dendogram](#) | [Export](#)

[CYP-2007](#) / [GSA 14](#) / [F-Trawlers \(>24 metres\)](#) / [07 CYP 14 F 03 33](#) / [Mar-Mar](#) | [Gear 0312](#) / [MUX](#)

Fishing Period / Gear Details

Catch and Effort Details

Current Selection:

1 Operational Unit [Click to change]

07 CYP 14 F 03 33

2 Fishing Period [Click to change]

Mar - Mar | Gear 0312

[Mar - Mar | Gear 0312]

4 Specify the parameters for the total Effort, Catch, Discards and Bycatch for this Fishing Period

Task 1.4 - Effort Details (Total): 567567 GT

Time	Capacity	Gear Units	Activity
? Measure <input type="text"/>	? Measure GT <input type="text"/>	? Measure <input type="text"/>	? Measure <input type="text"/>
? Value <input type="text"/>	? Value 567567	? Specify <input type="text"/>	? Value <input type="text"/>

Task 1.4 - Catch Details (Total)

Catch Landing Actual Estimate ? Value 6753 ? CPUE 0.011898

Task 1.4 - Discards

? Value

Task 1.4 - Bycatch (Tot)

? Value

5 Specify the parameters concerning the Catch and Biologic Data for the Selected Species

Task 1.2 - Selected Species:

Name	Main Tgt
Merluccius merluccius	<input type="checkbox"/>
Mullus spp	<input checked="" type="checkbox"/>



Task 1.4 - Catch Details (Species level)

? Catch Landing Actual Estimate ? Value 342 ? CPUE (Species) 0.000603

Task 1.5 - Biological data (Species level)

Length Range (mm): ? From ? To ? Average Length (mm)

? Sex ? Maturity Scale

? [Additional Information](#)

Save

Cancel

? Total BYCATCH (Tonnes)

[Back](#)

GFCM DECISIONS

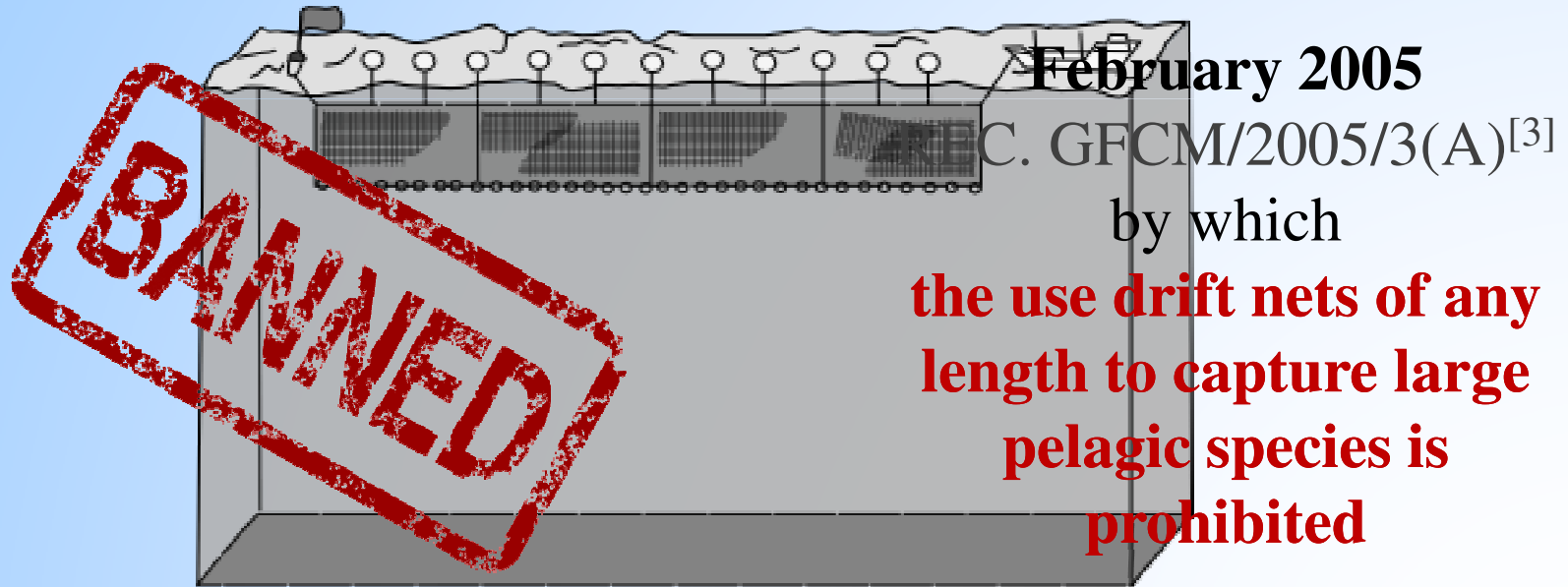
- Recommendations on conservation and management
- Recommendations on monitoring, control and surveillance
- Recommendations on data and information reporting
- ICCAT Recommendations relevant to the Mediterranean
- Resolutions

**e-Compendium of
GFCM decisions**



Drift nets

placed by ships and left free-floating at the surface of a sea until retrieved

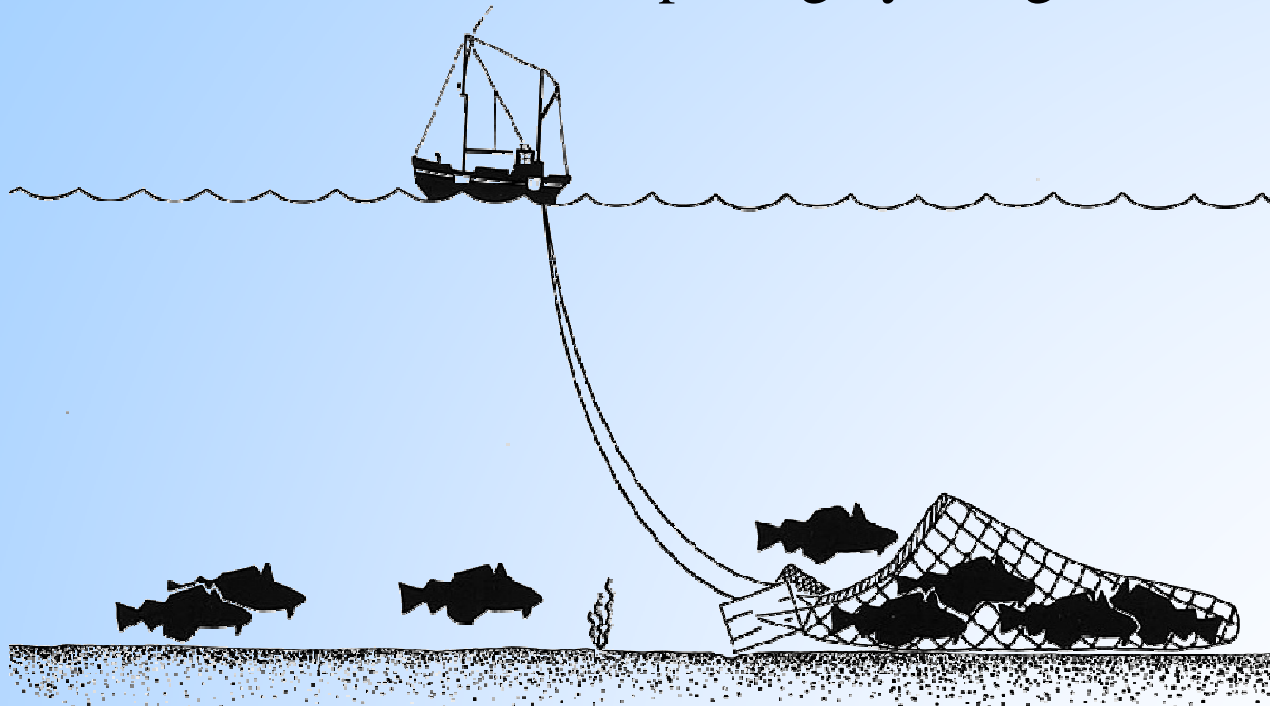


... but illegal fishing continues in countries such as Italy, France, Morocco, Turkey^[4]

Trawling nets

(benthic and pelagic)

consist of a cone-shaped body, closed by a bag or cod-end and extended at the opening by wings.



The use of trawling and dredging has been banned in depths beyond 1000 m.

GFCM Recomm.2005/1

GFCM on seabirds



REC. GFCM/35/2011/3^[14]

On reducing incidental by-catch of seabirds in fisheries in the GFCM Competence Area.

REC. GFCM/35/2011/7(E)^[14]

ICCAT Recommendation [07-07] on reducing the incidental by-catch of seabirds in longline fisheries.

- [...] develop mechanisms to ensure that incidental taking of seabirds is **monitored, recorded** and **kept to the lowest level** as possible [...]
- [...] **regular reports** on seabirds and fishing interactions to the GFCM-Secretariat through Task 1 [...]
- [...] **any event of incidental taking** and release shall be recorded by the vessel owner/master in the logbook for notification to GFCM Secretariat [...]
- [...] SAC shall advice on the most adequate **mitigation measures** [...]

GFCM on sea turtles



REC. GFCM/35/2011/4^[14]

On the incidental by-catch of sea turtles in fisheries in the GFCM Competence Area.

- [...] ensure the implementation of fisheries management measures that strong **eliminate the risk of incidental taking of sea turtles** in fishing operations [...]
- [...] sea turtles accidentally taken in fishing gears **shall be safely handled and released unharmed** [...]
- [...] shall be **prohibited to take onboard**, transshipping and land sea turtles unless otherwise required [...]
- [...] SAC shall provide in 2011 **information useful for fishermen** on the procedure to identify comatose turtles and release them when they are safe.



- [...] ensure that incidental taking of sea turtles in fishing activities is **monitored and recorded** [...]
- [...] **annual national reports to the SAC shall contain information on the interaction of the fishing fleets with sea turtles by gear type and characteristics:**
 - a) times;*
 - b) soak duration;*
 - c) depths and location;*
 - d) target species;*
 - e) sea turtle species;*
 - f) status of the specimen(s);*
- [...] fishing vessels using longlines and bottom-set nets shall **carry on board safe handling disentanglement and release equipment** no later than 2014 [...]
- [...] fishing vessels using surrounding and purse seines nets for pelagic species (including Fishing Aggregation Devices) **shall avoid encircling** sea turtles and release entangled sea turtles;

GFCM on monk seal



REC. GFCM/35/2011/5^[14]

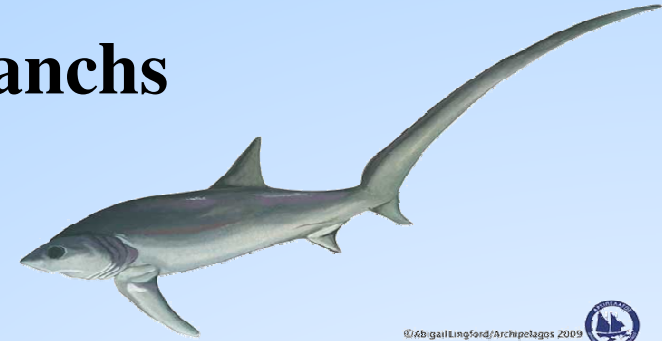
On fisheries measures for the conservation of the Mediterranean monk seal (*Monachus monachus*) in the GFCM Competence Area.

- [...] ensure **the implementation of fisheries management measures** that strongly mitigate the risk of incidental taking of monk seals during fishing operations [...]
- [...] **prohibition to take on board, transship and land** monk seals in the GFCM Competence Area or unless otherwise required to rescue and to secure assistance for the recovery of harmed animals [...]
- [...] specimens of monk seals accidentally taken in fishing gears **shall be released unharmed and alive**. Should it be already dead, the carcass will be landed and national authorities notified at the latest upon arrival at port [...]



- [...] **any event of incidental taking** and release shall be recorded by the vessel owner/master in the logbook for notification to GFCM Secretariat [...]
- [...] shall provide to GFCM Secretariat **the map and geographical positions identifying the location of already known monk seal caves** with information on fishing fleets using bottom-set nets registered in the ports close to the caves locations within a maximum range of 20 miles [...]
- [...] engage in capacity building efforts and other research cooperative activities to **improve knowledge on monk seals** [...]

GFCM on Elasmobranchs



REC. GFCM34/2010/4(C)^[15]

On the conservation of thresher sharks (Family Alopiidae) caught in association with fisheries in the ICCAT convention area.

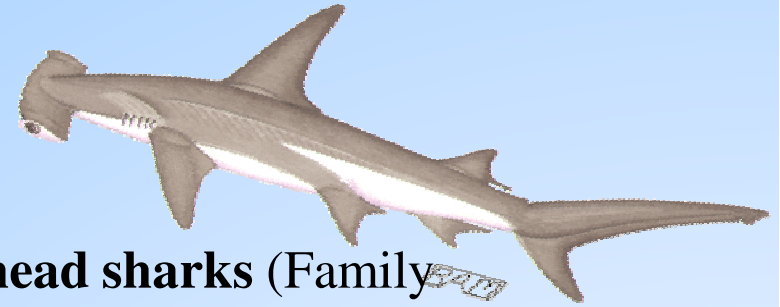
- [...] **prohibition** from retaining onboard, transshipping, landing, storing, selling, or offering for sale any part of *Alopias superciliosus* in any fishery [...]
- [...] **promptly release** unharmed *Alopias superciliosus* when brought alongside the vessel [...]
- [...] **implementation of research** on the species *Alopias spp.* in the Convention area in order to identify potential nursery areas [...]
- [...] strongly endeavor to ensure that vessels flying their flag **do not undertake a directed fishery** for species of the genus *Alopias spp.* [...]



REC. GFCM/35/2011/7(B)^[14]

ICCAT recommendation [10-06] on Atlantic Shortfin Mako (*Isurus oxyrinchus*) sharks caught in association with fisheries managed by ICCAT

- [...] **prohibition from retaining** Atlantic shortfin mako to vessels that do not report in Task 1 data on this species [...]
- The ICCAT Standing Committee on Research and Statistics shall conduct a **stock assessment for shortfin mako sharks in 2012** and advise the GFCM Commission on:
 - a) the annual catch levels that would support MSY;*
 - b) other appropriate conservation measures taking into account species identification difficulties;*



REC. GFCM/35/2011/7(C)^[14]

ICCAT recommendation [10-08] on Hammerhead sharks (Family *Sphyrnidae*) caught in association with fisheries managed by ICCAT.

- **[...] prohibition from retaining onboard, transshipping, landing, storing, selling, or offering for sale any part of Family *Sphyrnidae* (except for the *Sphyrna tiburo*), taken in the Convention area in association with ICCAT fisheries.**
- **[...] promptly release** unharmed hammerhead sharks when brought alongside the vessel [...]
- [...] take necessary measures to ensure that the Family *Sphyrnidae* (except of *Sphyrna tiburo*) **will not enter international trade** and shall notify the Commission of such measures [...]
- [...] **implementation of research** on hammerhead sharks in in order to identify potential nursery areas [...]



GFCM on cetaceans



Close cooperation with ACCOBAMS through a number of activities:

- organization of joint meetings (since 2006)
- distribution of the ACCOBAMS-GFCM questionnaire (2006)
- exchange between experts

CONCLUSIONS of GFCM/ACCOBAMS Working Group 2008^[12]

- [...] promote **projects on by-catch mitigation measures** (e.g. Tunisia-Morocco joint project on exclusion devices, acoustics pingers/tubes) and **implement solutions** to decrease the negative interactions fisheries/cetaceans [...]
- [...] by-catch issue should be faced focusing not on specific gears but **considering the sum of: gears, targets, areas and efforts** [...]
- [...] interviews and other types of surveys are useful in case of artisanal fisheries; **GFCM Task 1 is pointed out as the “potential” tool** to collect **quantitative and realistic** data on by-catch in the Region [...]

Is it possible to realistically quantify the by-catch in the Mediterranean region?

- ▶ There are **no official records** of by-catch from each country;
- ▶ Information about the impact of fishing on endangered species is **inconsistent and scarce**;
- ▶ **Few data being collected and submitted** according to existing protocols to feed databases such as the **ACCOBAMS**, **MEDLEM**, **BADMINTON**, etc;
- ▶ There is a **lack of aggregated knowledge** on the by-catch in the Mediterranean and Black Sea Region;

On the issue of data collection

- **GFCM Task 1 Protocol**

for reporting catch and fishing effort data per Operational Unit (OU) and geographical sub-area (GSA).

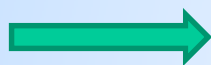
REC. GFCM/33/2009/3

Starting from 2010 data, Members shall submit information on by-catch of endangered species by total weight or total number **with specification on the codified ISCAAP Group:**

GFCM Framework Programme

- 1. - Enhancing the Ecosystem Approach to Fisheries (EAF) management**
- 2. - Improving data reporting capacity**
- 3. - Aquaculture, capture fisheries and Integrated Coastal Zone Management**
- 4. - Marine Protected Areas (MPAs) and artificial reefs**
- 5. Enhancing artisanal fisheries**
- 6. -Strengthening fisheries management in the Black Sea area**
- 7. - Supporting capture fisheries and aquaculture in the Southern Mediterranean Sea**

Contracting parties



- **Identification of specific needs (projects of interest)**
- **Identification of the time frame of the project(s)**
- **Identification of the sponsor the project(s)**



*General Fisheries Commission for the Mediterranean
Commission Générale des Pêches pour la Méditerranée*



**THANKS FOR
YOUR ATTENTION**

