

Fisheries In Turkey

03.10.2013 Tunisia

Murat TOPLU

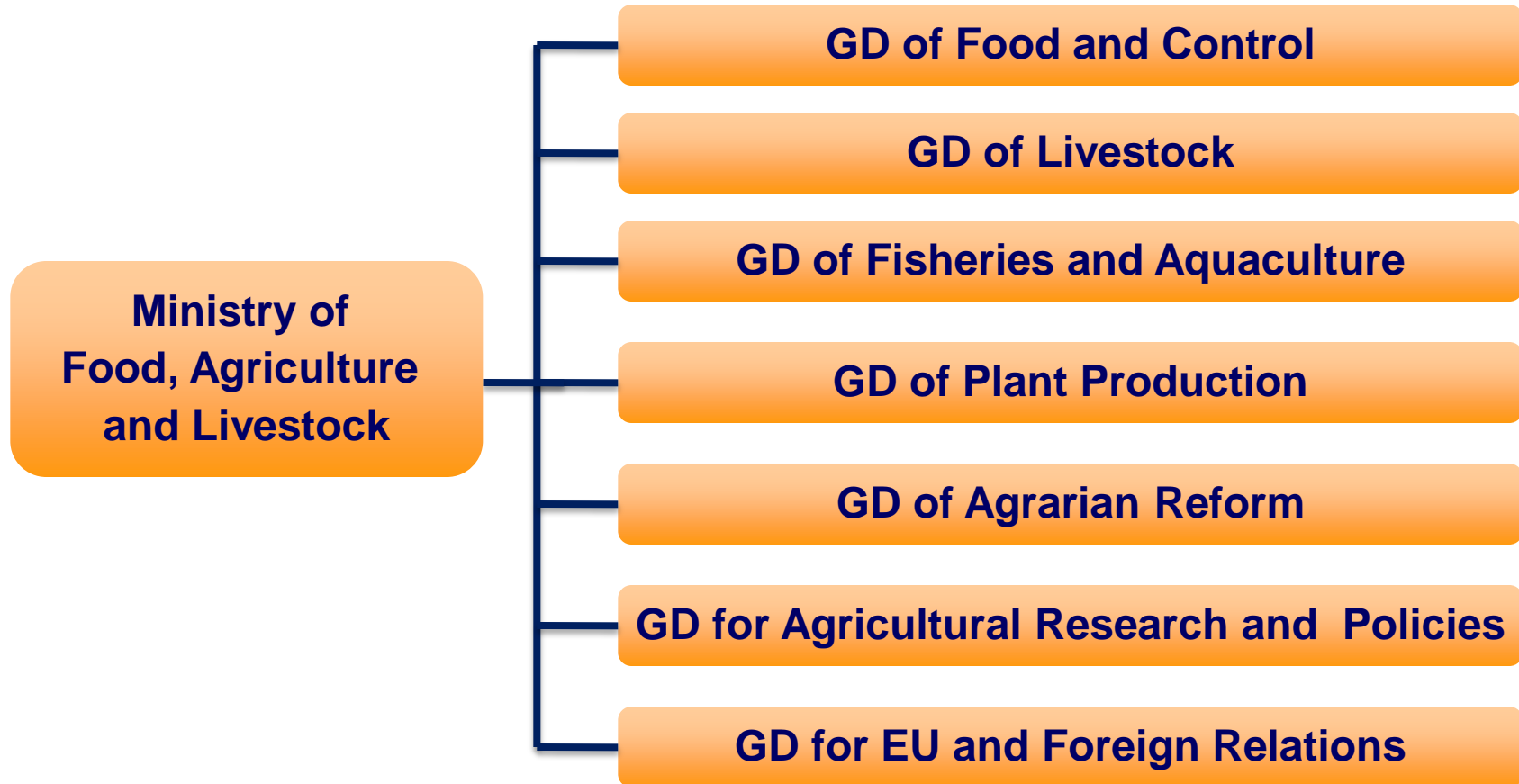
Ministry of Food, Agriculture and Livestock

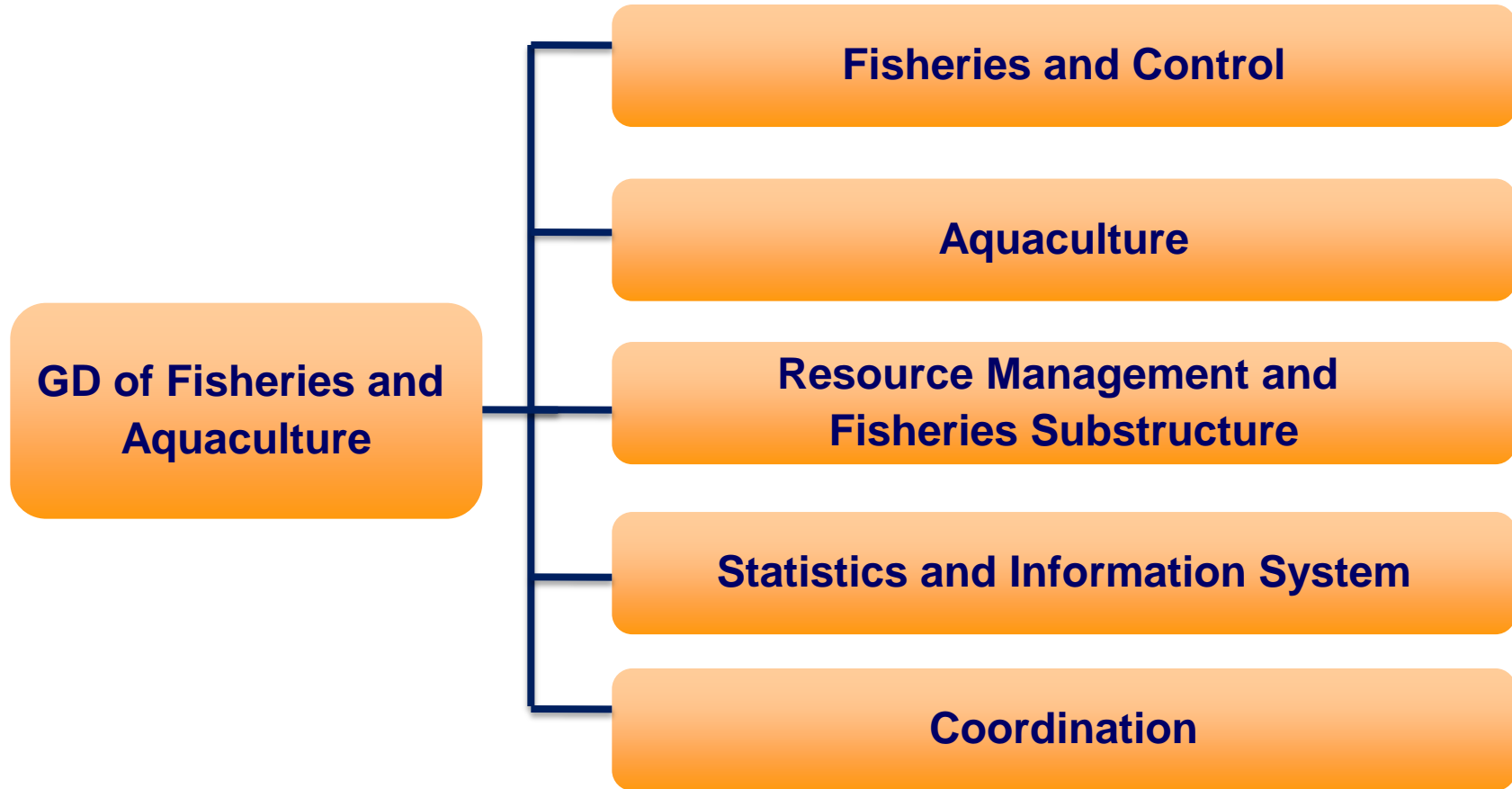
General Directorate of
Fisheries and Aquaculture





ORGANISATIONAL CHART







LEGISLATION

- Fisheries Law 1380 of 1971 (amended by Laws 3288 of 1986 and 4950 of 2003)
- Fisheries Regulation 22223 of 1995
- Implementing Regulation of Aquaculture
- Notification 3/1 Regulating Commercial Fishing
- Notification 3/2 Regulating Amateur (Sportive) Fishing

Fisheries Law Sets provisions for;

- Management of Fisheries
- Fishing Activities, Including Aquaculture
- Improvement, Incentives and Protection
- Prohibitions and Provisions
- Procedural Provisions
- Inspection and Control
- Penal Clauses

Implementing Regulation Sets rules for;

- License for Fishing
- Provisions on Production Areas
- Prohibition on Explosives and Hazardous Substances
- Fishing Gears
- Prohibitions, Limitations and Liabilities
- Inspection and Control

Aquaculture Regulation

- Site selection for inland and marine farms
- Application and evaluation procedures for fish farming licenses
- Approving the projects and issuing licenses
- Improving production capacity, species etc, cancellation (closing down farms), site changes and sales
- Other aquaculture activities (tuna fattening, organic farming, integrated production systems)
- Importing brood fish, egg and fry,
- Compulsory technical staff employment,
- Fish health management
- Environmental impacts and protection
- Monitoring and control of farming activities

Notification 3/1 Regulating Commercial Fishing

Main legislative instrument setting rules and principles for technical measures for fishing:

- Fishing gear
- Fishing season
- Fishing areas
- Protected areas
- Limitation on landing size
- Prohibition on species
- Others issues

Notification 3/2 Regulating Amateur (Sportive) Fishing

detailed regulations on:

- Objectives and definitions
- Performing amateur fishing
- Restrictions and bans for species
- Restrictions and bans for fishing gears
- Bans for areas
- Related legislations and enforcement



STATISTICS

Fishing Vessel

VESSEL			
YEAR	TOTAL	SEA	INLAND
2012	20.289	17.165	3.124

Black Sea

7.858

**Mediterranean +
Aegean+Marmara**

9.307

Fishing Vessel By Gear Categories

Type	Marmara	Aegean	Mediterranean	Total
Trawler	116	87	216	419
Purse seiner	138	93	59	290
Purseiner-trawler	36	2	14	52
Carrier	16	72	1	87
Other (artisanal)	2326	4455	1676	8457
Total	2632	4709	1966	9307

Capture Fish Production(tons)

Year	Inland		Marine	
	Amount	%	Amount	%
1970	13,249	7	166.080	93
1980	33,220	8	397.321	92
1990	37,315	10	342.017	90
2000	42,824	9	460.521	91
2005	46,115	11	380.381	89
2006	44,082	8	488.966	92
2007	43,321	7	589.129	93
2008	41,011	8	453.113	92
2009	39,187	8	425.275	92
2010	40,259	8	445.680	92
2011	37.096	7	477.658	93
2012	36.120	8	396.322	92

Marine Production by Species

Species/Year	2007	2008	2009	2010	2011	2012
Anchovy	385.000	251.675	204.699	229.023	228.491	163.981
Sprat	11.921	39.303	53.385	57.023	87.141	12.091
Horse mackerel	32.021	32.177	28.268	20.447	25.010	24.625
Sardine	20.941	17.531	30.091	27.639	34.709	28.248
Whiting	12.940	12.231	11.146	13.558	9.455	7.367
Atlantic bonito	5.965	6.448	7.036	9.401	10.019	35.764
Grey mullet	8.291	3.345	2.987	3.119	2.514	4.010
Blue fish	6.858	4.048	5.999	4.744	3.122	7.389
Turbot	769	528	383	295	166	202



MONITORING AND CONTROL

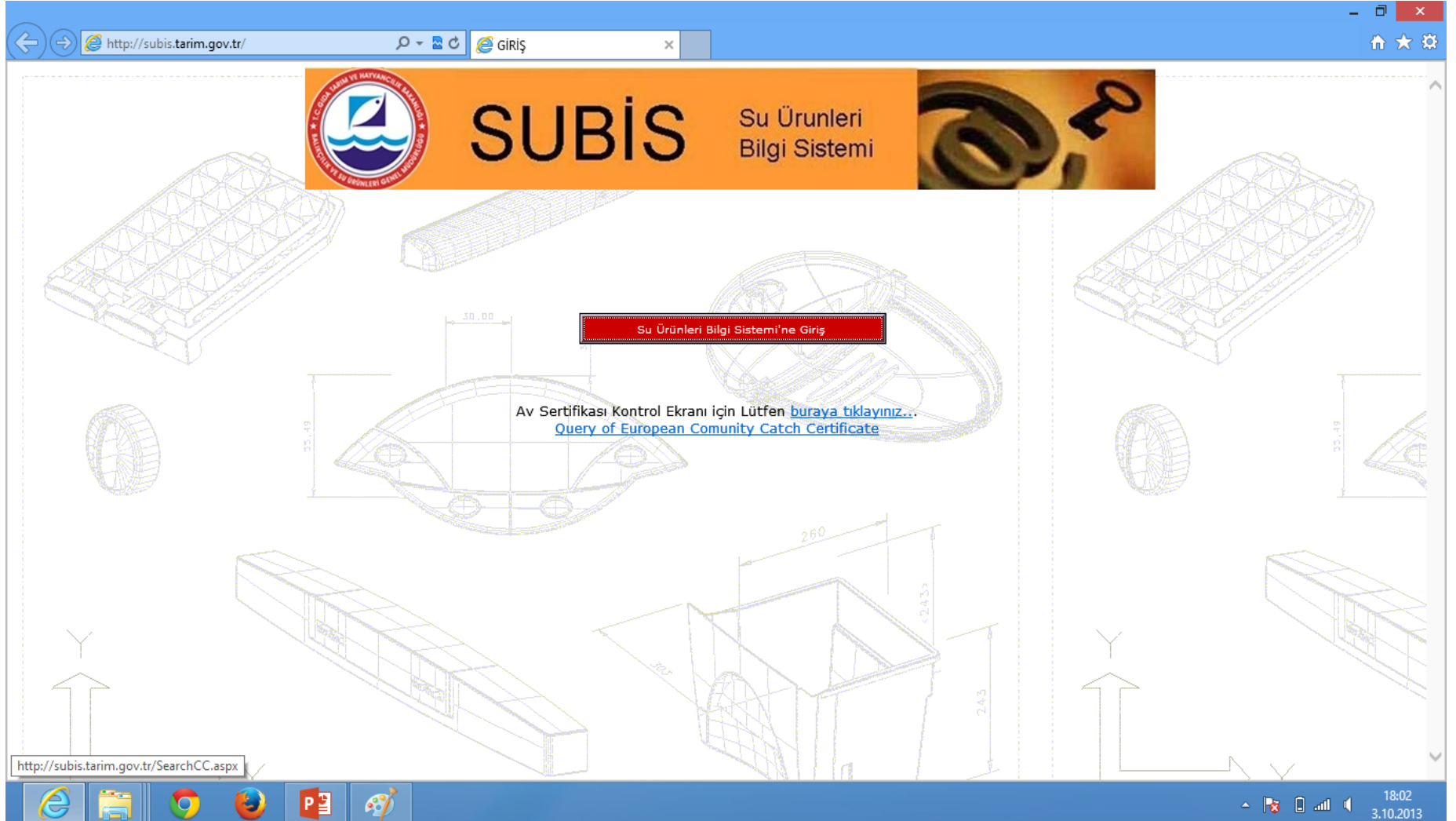
FISHERIES INFORMATION SYSTEM (FIS)

- Registration of Fishing vessels
- Registration of commercial and amateur fishermen.
- Special Fishing Permit for fishing vessels.
- Quota monitoring
- Monitoring the catch of anchovy sent to cold storage and processing plants.
- Issue of fishing licenses as part of EU regulation 1005/2008

EU Catch Certificate (FIS)


EUROPEAN COMMUNITY CATCH CERTIFICATE AVRUPA TOPLULUĞU AV BELGESİ						
Document Number Belge No						
1. Validating authority Onaylayan kurumun						
Name Adı		Address Adresi		Tel. Tel.	Fax Faks	
2. Fishing vessel name Balıkçı Geminin Adı		Flag-Home port and registration number Bağlama Limanı ve Kayıt Numarası		Call sign Çağrı Kodu	IMO/Lloyd's Number ⁽²⁾ IMO/Lloyd's numarası ⁽²⁾	
Fishing licence No-Valid to Ruhsat No ve Geçerlilik Tarihi		Inmarsat No, Fax No, Telephone No, E-mail address ⁽³⁾ Inmarsat No, Faks No, Telefon No, E-mail adresi ⁽³⁾				
3. Description of product Ürün Tanımı			Type of processing authorised on board Güvencede izin verilen işleme tipi		4. Reference of applicable conservation and management measures Uygulanabilir koruma ve yönetim önlemlerine ilişkin referans	
Product code/ Species Ürün Kodu/ Tür	Logbook No ⁽²⁾ Seçir Defteri No ⁽²⁾	Sales Note No Satış Bildirimi No	Catch area(s) and dates Av Alanı ve Tarihi	Estimated live weight (kg) Tahmini Canlı Ağırlık	Estimated weight to be landed (kg) Karıya Çıkartılan Tahmini Ağırlık	Verified weight landed (kg) Doğrulanmış Ağırlık
5. Name of master of fishing vessel-Signature-Seal Gemi Sahibi-İmza-Kaşe						
6. Declaration of transhipment at sea Denizde Aktarma Bildirimi		Signature and date İmza ve Tarih	Transhipment date/area/position Aktarma Tarihi/coğrafik alan /konum		Estimated weight (kg) Tahmini Ağırlık (kg)	
Master of receiving vessel Alıcı Gemi Kaptanı	Signature İmza	Vessel name Balıkçı Geminin Adı	Call sign Çağrı sinyali	IMO/loyds number ⁽²⁾ IMO/Lloyd's numarası ⁽²⁾		
7. Transhipment authorisation within a port area Bir Liman Alanı İçinde Nakil Yetkilendirmesi						
Name Adı	Authority Yetkili	Signature İmza	Address Adres	Tel	Port of landing Karıya Çıkış Limanı	Date of landing Karıya Çıkış tarihi
8. Name and address of exporter/İhracatçının Adı ve Adresi				Signature/İmza	Date/Tarih	Seal/Kaşe
9. Flag State authority validation Bayrak Ülke Yetkilisinin Onayı Name/ title /Adı/Ünvanı				Signature/İmza	Date/Tarih	Seal (stamp)/ Mühür
10. Transport details (see Appendix) Nakil Ayrıntıları (Eke Bakınız)						

EU Catch Certificate (FIS)



http://subis.tarim.gov.tr/

GİRİŞ

 **SUBİS** Su Ürünleri Bilgi Sistemi

Su Ürünleri Bilgi Sistemi'ne Giriş

Av Sertifikası Kontrol Ekranı için Lütfen [buraya tıklayınız...](#)
[Query of European Community Catch Certificate](#)

30,00

35,49

260

243

243

30,5

http://subis.tarim.gov.tr/SearchCC.aspx

18:02
3.10.2013

VESSEL MONITORING SYSTEMS

- Automatic Identification System (AIS) Obligatory for all fishing vessels over 15 m.
- Satellite based VMS obligatory for all Bluefin Tuna (BFT) vessels.
- Observing system is exits for the BFT

Fisheries Port Offices (FPOs)

41 FPO's are active in total.

- Fishing controls
- Fishing gears controls
- Logbook data entry into FIS
- Issuing of certificate of origin and certificate of transportation
- Monitoring of catch composition
- Trainings for fishermen



FISHERIES CONTROLS

Controls are done during

- License issuance,
- Fishing operations,
- Landings after fishing operations,
- Transportation of products and
- Points of sale.

Additional staff has been employed to improve efficiency of fisheries controls.

ENFORCEMENT

Sanctions are being applied for fisheries violations

- Fines,
- Confiscation of products caught,
- Temporary seizure of fishing license and
- Cancellation of fishing license.

SUBSIDIES

- Decreasing fleet with subsidies

A new support scheme was taken into effect for the reduction of the number of fishing vessels for the conservation of stocks. Fishing license of 310 vessels over 12 meter was annulled and removed from fleet in 2013 in the Mediterranean (Aegean Sea and Marmara Sea included) until now.

This year this scheme will be implemented to the vessels over 10 m to reduce fishing effort on stocks.

INSPECTION AND CONTROL PRACTISES

2012 INSPECTION

Number of inspections	89.994
Quantity of fishery products seized (ton)	823
Fines applied (Turkish Lira)	10.360.381
Total number of sanctions	7.287

- Fishing license of 134 vessels was annulled for the violation of legislations in force
- During the inspections the species such as red mullet and sole was seized due to the minimum size violation

Main Target Species on IUU Fisheries ?

- Swordfish
- Atlantic bonito
- Horse mackarel
- Bluefin Tuna
- Main fishing gears for IUU fishing are purseiners, trawlers and setnets
- Main illegal fishing reported within territorial waters of Turkish part of Aegean and Mediterranean sea

Fishing Ports



AUCTION INSPECTIONS



AUCTION INSPECTIONS



AUCTION INSPECTIONS



LANDING INSPECTIONS



TEŐEKKÜRLER.

www.tarim.gov.tr

