



General Fisheries Commission for the Mediterranean  
Commission Générale des Pêches pour la Méditerranée



LaMed-1 Project

# Cyprus

---

by (Lavrentios Vasiliades, Fisheries Officer, Department of Fisheries and Marine Research)



Expert Meeting on Fisheries Legislation in  
the Mediterranean and the Black Sea

Beirut, Lebanon, 26-28<sup>th</sup> October 2011



## Overview of the fisheries legal framework

---

The administrative authority over the marine fisheries sector is the Department of Fisheries and Marine Research of the Ministry of Agriculture Natural Resources and Environment.

Legal Framework Definitions and terms:

Terms defined in European Union and National Legislation

Objectives of legal framework: ensuring management measures are based on the best scientific evidence available, protection of ecosystem, minimization of pollution



## Overview of the fisheries legal framework

---

### Fishing Authorization:

The National legislation requires that all vessels operating within territorial and/or International waters require a fishing authorization.

### Fisheries management plans established:

- 1) 2011 MANAGEMENT PLAN FOR THE BOTTOM TRAWL FISHERY WITHIN THE TERRITORIAL WATERS OF CYPRUS (article 19, EC 1967/2006)
- 2) FISHING EFFORT ADJUSTMENT PLAN FOR CYPRUS FLEET TARGETTING DEMERSAL AND MESOPELAGIC STOCKS IN THE COASTAL WATERS OF CYPRUS



## Overview of the fisheries legal framework

---

“fishing license” means any authorization to fish that:

- (a) allows the use of vessel for fishing in the areas that are stipulated by the license
- (b) it constitutes a condition for the submission of applications for special fishing permits

### **1.2 Administrative/institutional framework:**

Fisheries fund Operational Program for fisheries -  
Monitoring Committee

Advisory Committee on Fisheries,

Advisory Committee on Aquaculture

# Fisheries fund Operational Program for fisheries - Monitoring Committee 2008

---





## Overview of the fisheries legal framework

---

### 1.3 Implementation of international instruments

- UNCLOS (Cyprus ratified -1988)
- FAO/GFCM
- ICCAT



## Access regimes to fisheries resources

---

No fisheries access agreements concluded

The Fisheries Basic Act governs the access to marine resources:

Prerequisites for licensing is the submission of fishing applications each year within a prerequisite time frame.

The vessels that are licensed are included in the Fleet Vessel Register (Commission Regulation(EC) No 26/2004).

Issuance of approved license applications is subject to a fee depending on the type of license.

Duration of the fishing license is annual (from the date of issuance) with all licenses terminated on the 31<sup>st</sup> of December each year. Licenses are not transferrable.

Licenses can be suspended or revoked by the Director of the DFMR.



## Access regimes to fisheries resources

---

The Fisheries legislation does not set minimum requirements for safety at sea prior to the issuance of any fishing license. It is noted that-

*General safety on board the vessel, as well as the presence of lifesaving equipment is governed by the Merchant Shipping Law (administrative authority - Department of Merchant Shipping)*

*The Certificate relating to specific hygiene rules for food of animal origin (administrative authority –Veterinary Services)*





## LaMed-1 Project

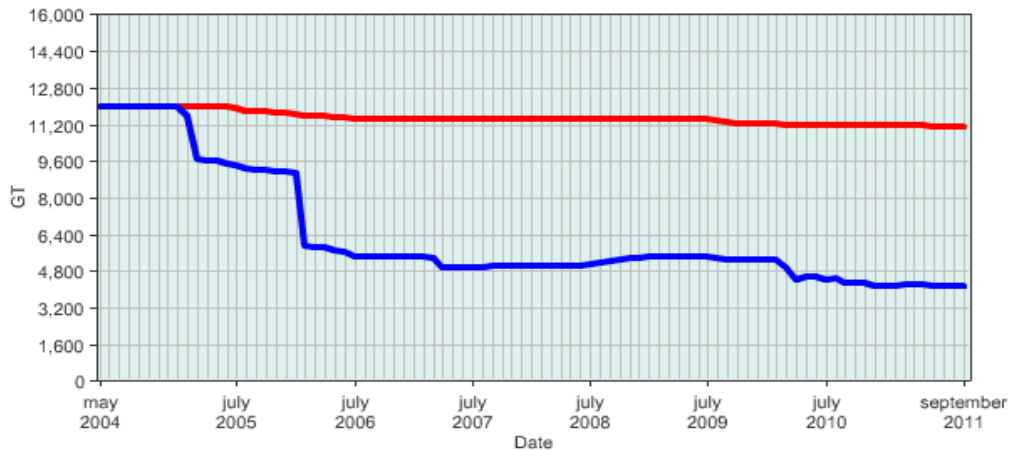
# Conservation and management measures

## 3.1 Fishing capacity

Fishing capacity is controlled by the Fleet Vessel Register Commission Regulation (EC) No 26/2004.

[http://ec.europa.eu/fisheries/fleet/index.cfm?method=RES1.Stat&country=CYP&graph\\_type=line](http://ec.europa.eu/fisheries/fleet/index.cfm?method=RES1.Stat&country=CYP&graph_type=line)

Cyprus : tonnage of the fleet compared to its tonnage ceiling.  
Evolution between 1-5-2004 and 1-9-2011.



1600

Capacity ceiling GT

Capacity in GT

▲ and ■ Values at 1st day of the month

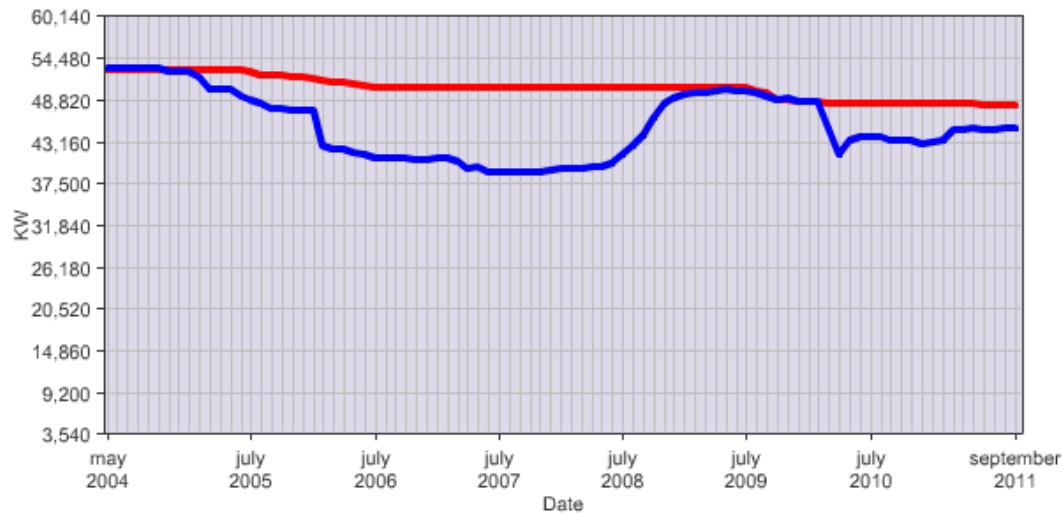


## LaMed-1 Project

# Conservation and management measures

## 3.1 Fishing capacity

Cyprus : power of the fleet compared to its power ceiling.  
Evolution between 1-5-2004 and 1-9-2011.



5660

▲ Capacity ceiling KW

■ Capacity in KW

▲ and ■ Values at 1st day of the month



## Conservation and management measures

---

### 3.1 Fishing Effort

#### **Measure designed to control fishing effort**

Fisheries Basic Act, restriction on:

- The number of licenses issued
    - Artisanal fisheries up to 500 licensed vessels
    - Polyvalent fisheries "23 licenses"
  - Gear restriction Council Regulation 1967/2006 and Fisheries Basic Act
- 2011 MANAGEMENT PLAN FOR THE BOTTOM TRAWL FISHERY  
WITHIN THE TERRITORIAL WATERS OF CYPRUS



## Conservation and management measures

---

### **3.3 Area and time restrictions**

Council Regulation 1967/2006 Article 13 "Minimum distances and depths for the use of fishing gears"

Based on national Legislation Regulatory Administrative Order "no fishing areas"

- within the Territorial waters of the Republic of Cyprus for the use of Bottom Trawl fishing gear
- Prohibited areas for fishing with all fishing gears
- Prohibited use of certain types of artisanal nets per area and time



## Conservation and management measures

---

### **Other conservation and management measure**

Artificial reefs have been established in Cyprus

Conservation and management measures relating to close season:

- Closed season for bottom trawlers operating in the territorial waters of the Republic of Cyprus 1<sup>st</sup> of June to 7<sup>th</sup> of November.
- Closed season for swordfish fishery (ICCAT Recommendation 09-04)
- Closed season for Bluefin tuna Council Regulation (EC) No 302/2009 Article 7 "Closed fishing season"

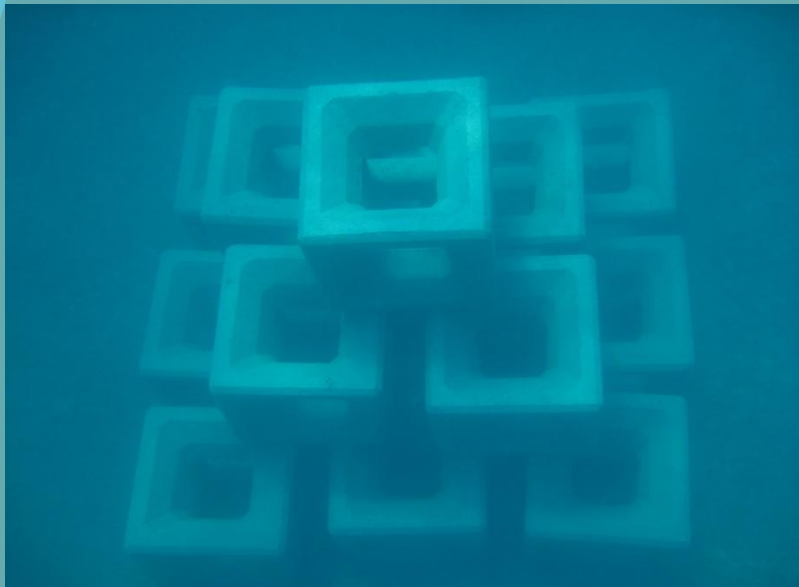


## Conservation and management measures

---

### Other conservation and management measure

Artificial reefs have been established in Cyprus





## Monitoring, control and surveillance measures

---

Legislation in force regarding Monitoring, Control and Surveillance:

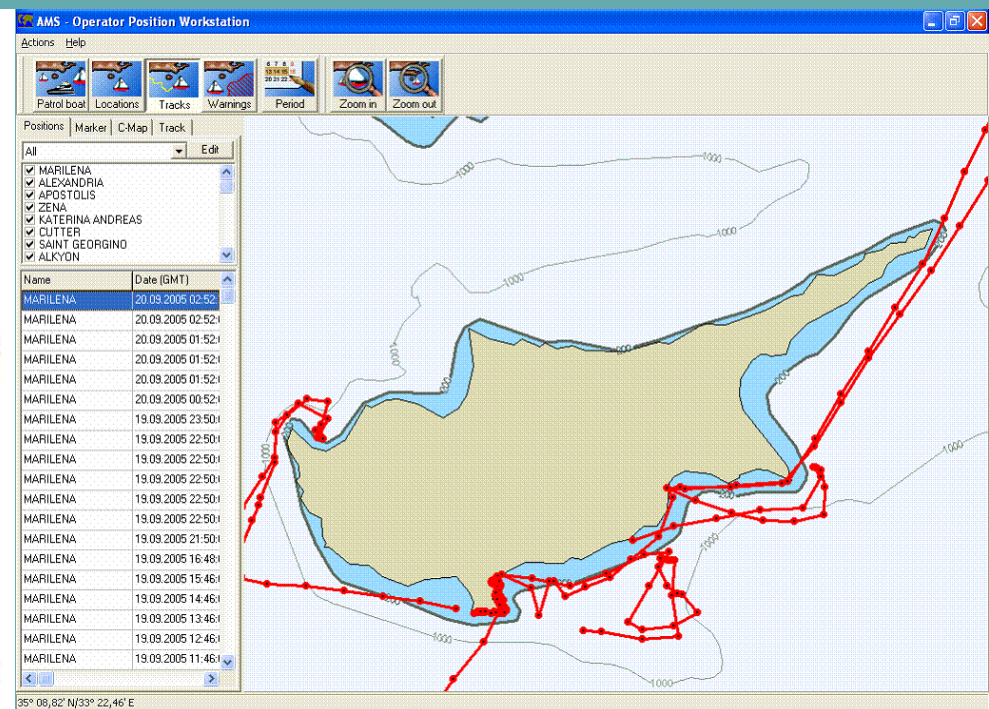
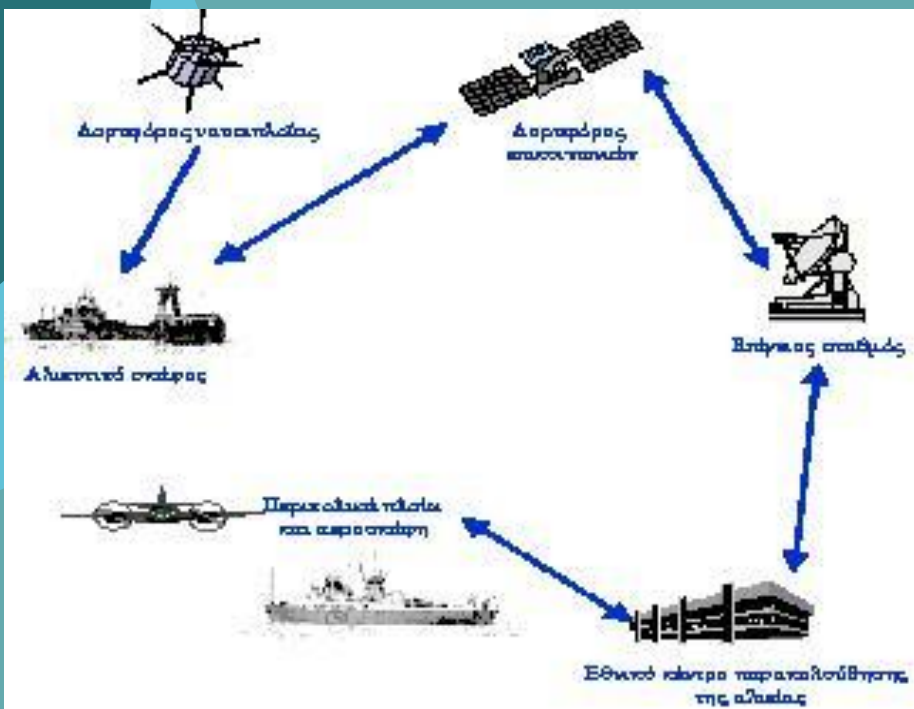
EU /National legislation requires that all licensed professional fishing vessels have Vessel Monitoring System

Enforcement officers are authorized to seize prohibited or non-regulatory fishing gear and fish caught in the commission of an offense



### LaMed-1 Project

# Monitoring, control and surveillance measures







## LaMed-1 Project

# Monitoring, control and surveillance measures

If there is a suspicion of violation of the fisheries acts the Inspector has the right to enter (except residences where you need a warrant), search and confiscate any item or product.

DEPARTMENT OF FISHERIES  
AND MARINE RESEARCH –  
Inspectorate service is  
responsible for carrying out port  
and sea inspections





## Monitoring, control and surveillance measures

---

### Measure designed to control fishing effort

Fisheries Basic Act, restriction on:

- The number of licenses issued
    - Artisanal fisheries up to 500 licensed vessels Category A and B
    - Polyvalent fisheries “23 licenses”
    - Bottom trawlers 2 licenses
  - Gear restriction Council Regulation 1967/2006 and Fisheries Basic Act 2011
- MANAGEMENT PLAN FOR THE BOTTOM TRAWL FISHERY WITHIN THE TERRITORIAL WATERS OF CYPRUS



## Monitoring, control and surveillance measures





## Enforcement procedures and sanctions

---

Dispute settlement mechanisms provided by the existing legal framework

- Fisheries Advisory Committee
- Fisheries Basic Act- Article 24.1

Fisheries management tools used among user groups to resolve conflict

- Zoning areas have been established for Aquaculture.
- Bottom trawlers operate at a distance of 0.7 nautical miles from the coast.
- Prohibition of bottom trawling in certain areas

# Zoning areas have been established for Aquaculture

---





## LaMed-1 Project

# Enforcement procedures and sanctions

---

- Fisheries Advisory Committee



# Cyprus NATURA 2000 map



Thank you for your attention

---

